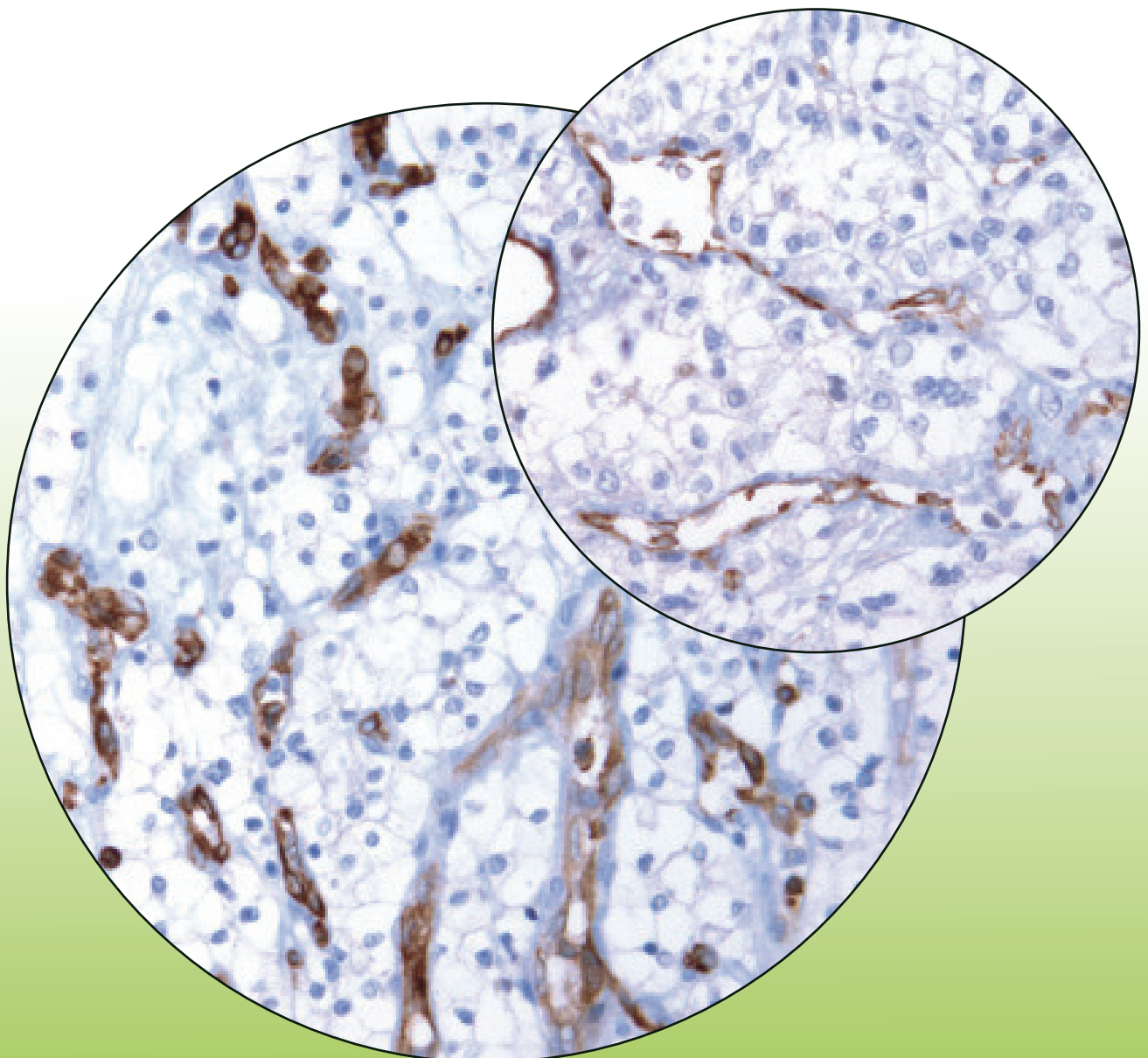


Endocan / ESM-1

Biomarker of intratumoral
endothelium in renal carcinoma

Monoclonal antibody MEP08



The monoclonal antibody against human endocan / ESM-1 called MEP08¹ (LIA-0901) is a pertinent biomarker to evaluate endothelial activation and neoangiogenesis in kidney cancers

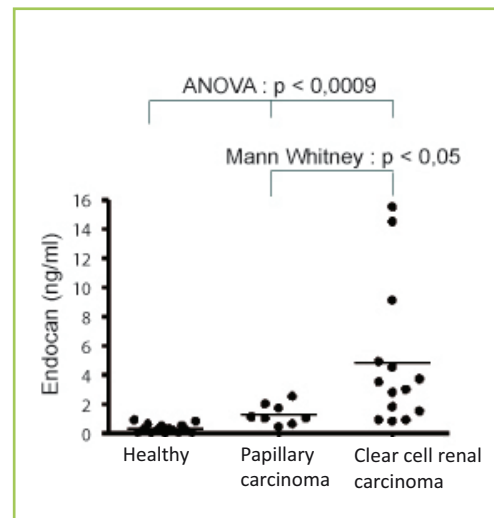
Background

Endocan also called endothelial cell specific molecule 1 (ESM-1) is a pertinent biomarker of **endothelial dysfunction** (Sarrazin et al. 2010). In vitro, endocan / ESM-1 is upregulated in presence of pro-angiogenic molecules such as VEGF (Sarrazin et al. 2010). Recently, endocan was shown to be overexpressed in **tip cells** during **neoangiogenesis** (Strasser et al. 2010 ; Recchia et al. 2010).

By immunohistochemistry endocan / ESM-1 is detected in the vessels of **clear cell renal carcinoma**, decorating each small and large intratumor vessels, but never detected in vessels distant from the tumor (Leroy et al. 2010). Blood levels of endocan has been shown to be increased in patients with kidney cancers (Leroy et al. 2010). Interestingly, VEGF-induced endocan secretion was shown to be fully abolished in presence of anti-angiogenic drugs (Leroy et al. 2010).

References

Grigoriu et al. (2006) Clin. Cancer Res. 12:4575-4582
Leroy et al. (2010) Histopathology 56:180-187
Recchia et al. (2010) Invest. Ophthalmol. Vis. Sci. 2:1098-1105
Sarrazin et al. (2010) J. Cancer. Sci. Ther. 2:47-52
Strasser et al. (2010) Blood 115:5102-5110



Blood levels of endocan / ESM-1 are highly increased in patients suffering from clear cell renal carcinoma (according Leroy et al. 2010).

Main features

- Monoclonal antibody (mouse)
- Easy to use / do not required any enzymatic pre-treatment
- Recommended for immunohistochemistry (paraffin and frozen sections)
- Can be use with automatized procedures
- Specific of the N-terminus of human endocan
- Stored at 4°C / -20°C

¹ This product is for research use only and is not intended for diagnostic or therapeutic use

Lunginnov
Campus de l'Institut Pasteur de Lille
1 rue du Pr Calmette, 59000 LILLE, France
Tel : (33) 320 877 211 / Fax : (33) 320 877 884
E mail : contact@lunginnov.com
www.lunginnov.com

 **Lunginnov**