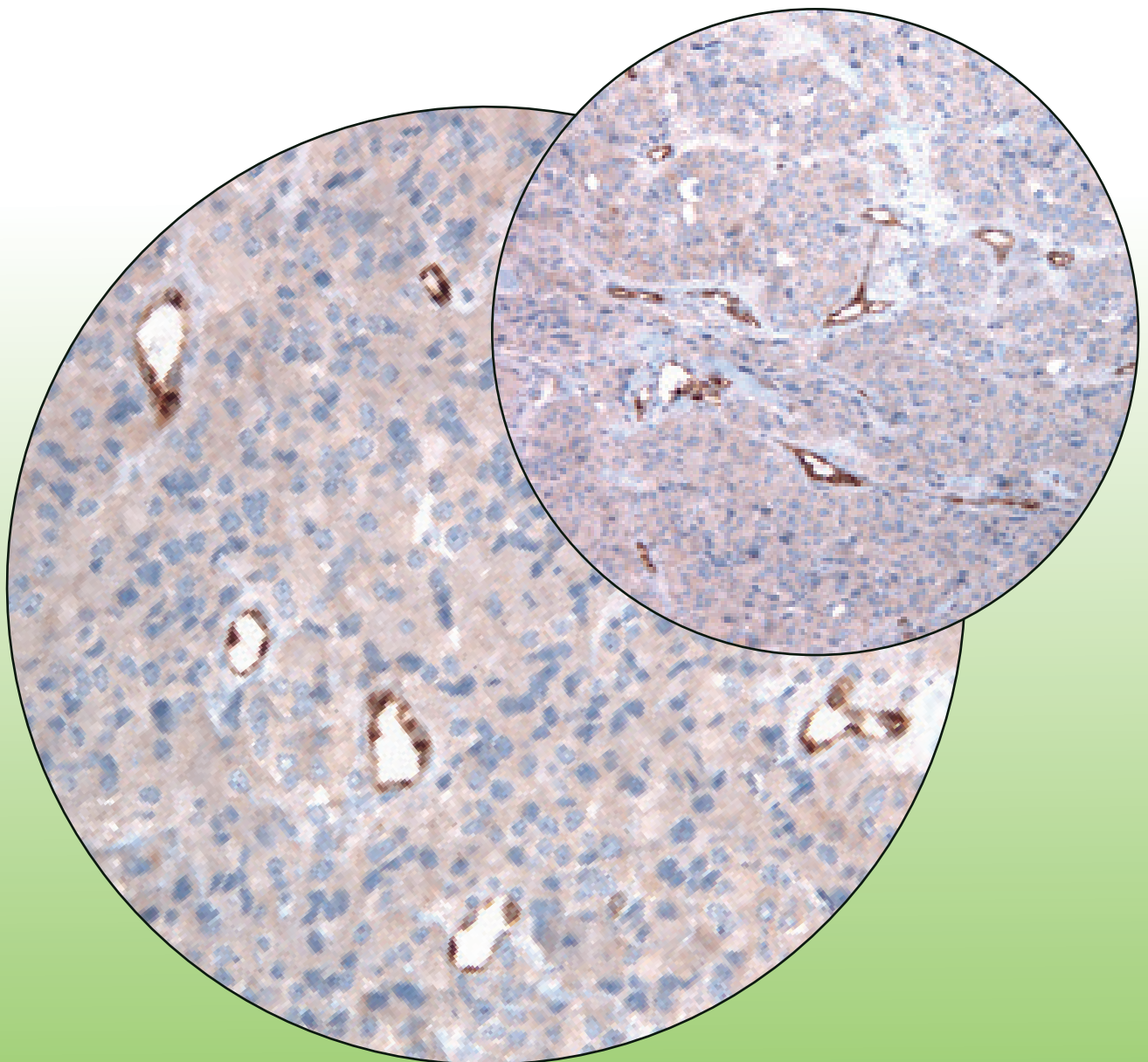


Endocan / ESM-1

Biomarker of vascular remodeling
in the pituitary tumors

Monoclonal Antibody MEP08 (LIA-0901)



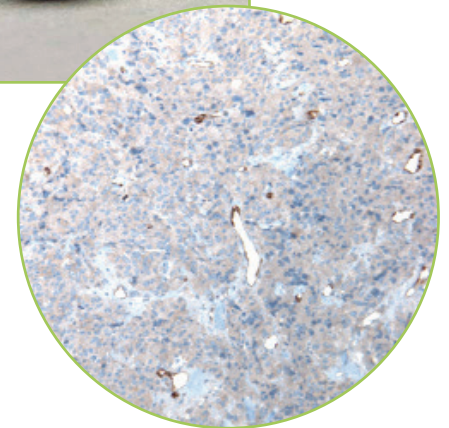
The monoclonal anti-Endocan / ESM-1 antibody clone MEP08 (LIA-0901) as a pertinent tool to assess vascular remodeling in pituitary tumors

Description

Endocan, also called «Endothelial cell Specific Molecule» (or ESM-1) is a **biomarker of endothelial dysfunction in various types of tumors** (Sarrazin et al. 2010). Furthermore, Endocan has been recently described as a **biomarker of «tip cells»**, that are the endothelial cells involved in neoangiogenesis process.

Using the MEP08 antibody (LIA-0901), Dr Cornelius and collaborators (Lille, France) have demonstrated a strong association between Endocan immunoreactivity and tumor progression, and also with tumor size, proliferation or p53 expression (Cornelius et al. 2012). The mean vessel area assessed by morphometric analysis and compared with CD34 expression, was significantly higher in the pituitary tumors with endothelial expression of Endocan / ESM-1.

Expression of Endocan / ESM-1 in endothelial cells appears as a relevant biomarker of the aggressive behavior in pituitary tumors.



References

- Cornelius et al. (2012) Brain Pathol. In Press
- Grigoriu et al. (2006) Clin. Cancer Res. 12:4575-4582
- Leroy et al. (2010) Histopathology 56:180-187
- Maurage et al. (2009) J. Neuropathol. Exp. Neurol. 68:633-641
- Sarrazin et al. (2010) J. Cancer. Sci. Ther. 2:47-52

Main Features

- Monoclonal antibody (mouse)
- Recommended for immunohistochemistry (paraffin and frozen sections)
- Specific of the N-terminus of human endocan
- Easy to use / do not required any enzymatic pre-treatment
- Can be use with automatized procedures
- Stored at 4°C / -20°C

This product is for research use only and is not intended for diagnostic or therapeutic use

Lunginnov sas
Campus de l'Institut Pasteur de Lille
1 rue du Pr Calmette, 59000 LILLE, France
Tel : 03 20 87 72 11 / Fax : 03 20 87 78 84
E mail : contact@lunginnov.com
www.lunginnov.com

