

Who is Lunginnov ?

Lunginnov is today a well-recognized manufacturer of high-quality and **cost-effective** monoclonal antibodies, recombinant proteins and immunoassays for a wide range of research and development applications.

We provide our **innovative tools** to study endothelial dysfunctions in diseases when endothelium gets challenged (sepsis, cancers, obesity, dengue fever, inflammatory diseases, diabetic retinopathies, etc.).

What is Endocan / ESM-1 ?

Endocan also called ESM-1 (endothelial cell specific molecule 1) was originally discovered as a product of endothelial cells from the lung.

Structurally, **Endocan / ESM-1 is a circulating proteoglycan** of 50 kDa, highly regulated by vascular endothelial growth factor or by tumor necrosis factor alpha. No other molecule is currently known to be a read out of endothelial activation and dysfunction.

Therefore, Endocan / ESM-1 appears as a **unique biomarker** of neoangiogenesis and of vascular remodeling in diseases.

How to buy ?

By fax: (33) 320 877 884

By e-mail: commercial@lunginnov.com

By courier:

LUNGINNOV SAS
Campus de l'Institut Pasteur de Lille
1 rue du Pr Calmette
59000 Lille
FRANCE

Online: www.lunginnov.com

Our distributors:

Please visit our website for the complete list of our distributors present all around the world

Informations

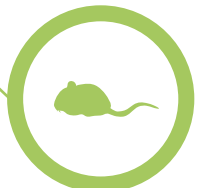
Reagents for animal studies are for **Research Use Only** and are not intended for Diagnostic or Therapeutic Use.

All our innovative products are manufactured in France.

All our tools to study endothelial dysfunctions have been validated by peer-reviewed publications since 2001.



Discover Our Range of Products for Animal Studies





Our Monoclonal Antibodies

Reference	Clone	Reactivity
LIA-0901	MEP08	Chicken, Monkey
LIA-1001	MEP14	Chicken, Monkey, Rat, Pig
LIA-0905	GGR222	Mouse, Rat
LIA-1101	GGR237	Mouse, Rat

Lunginnov's antibodies are monoclonal antibodies that have been purified by immunoaffinity chromatography. They are rigorously tested to provide our customers with high quality products.



Endocan / ESM-1 as pertinent biomarker of endothelial dysfunctions

At Lunginnov, we offer unique tools to study mouse, rat, monkey, chicken or pig Endocan as pertinent biomarker of endothelial dysfunctions.

Our Recombinant Proteins

Reference	Clone	Application
LIP-1003 10U	Mouse Endocan 50 kDa	Bioassay/WB
LIP-1003 50U	Mouse Endocan 50 kDa	Bioassay/WB
LIP-1102 10U	Mouse Endocan 20 kDa	Bioassay/WB
LIP-1102 50U	Mouse Endocan 20 kDa	Bioassay/WB

To discover all our new products, please visit our website : www.lunginnov.com



Our ELISA Kits

Reference	Clone	Reactivity
LIK-1102	DIYEK M1	Mouse
LIK-1103	DIYEK R1	Rat

The DIYEK «Do It Yourself» ELISA Kit (LIK-1101) is a development kit that contains the key components to realize two ELISA plates (meaning that you can run 88 samples in duplicate). The DIYEK formats are intended for experienced ELISA users.

